



## CONTROL SYSTEMS ENGINEERING

- Distributed Control Systems (DCS)
- Programmable Logic Controllers (PLC)
- Hybrid Control Systems
- Instrumentation and Communications

## ELECTRICAL SYSTEMS DESIGN

- Power System Analysis
- Sub-Station Design
- Protective Relaying
- Distribution Systems
- Power Generation / Industrial Systems

## Upcoming Events

- **COAL-GEN**  
July 28 - 30
- **ISO New England**  
September 13 – 14
- **POWER-GEN**  
Nov. 30 – Dec. 2

## Advanced Startup / Shutdown Control for 11 US Power Plants

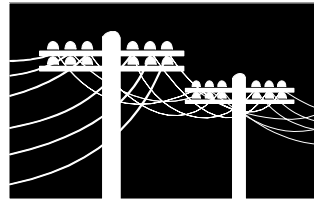
ControlPoint has been contracted to provide Automatic Startup and Shutdown Control for 11 power plants located in Texas, Mississippi, and Arkansas. These combined-cycle plants total over 3300 MW of power. The project involves enhancement of the existing DCS logic to provide each plant with automatic sequence control for plant startup and shutdown cycles. The projects are part of a cost saving effort for units that are dispatched on a daily basis. Automatic control sequencing reduces startup and shutdown time, thus reducing the fuel costs while the plant is not earning revenue. Consistent start and shutdown sequences also extend equipment and plant life, and provide uniform operation interface.



ControlPoint has completed automatic control for startup and shutdown at numerous power plants both domestic and foreign. We work with the worlds leading manufacturers of power plant prime mover equipment and are experienced with most DCS manufacturers.

## Electrical Distribution for Niagara Mohawk

Control Point has recently been chosen to provide engineering design services to Niagara Mohawk as part of National Grid's ongoing system improvement program. Control Point will utilize state-of-the-art design software to simultaneously engineer and design modifications to primary and secondary electrical distribution facilities along Rte 40 in Troy, and Rte 56 in Ballston, NY.



Project scope includes engineering services to design distribution system rebuild and conversion, and will extend to coordination of environmental issues, abutter concerns, forestry considerations and interaction with local authorities and telephone/cable utilities.

ControlPoint is routinely contracted by electric utilities, industrial manufacturers, and contractors to engineer and design substations, distribution systems, and power generation systems.

## Diesel Generators On-Line in Four Weeks for CMEEC

ControlPoint provided electrical engineering and design for a fast-track power generation project. In a four-week schedule, the project included design-engineering, procurement, and installation of four 2MW Diesel Generators. The project was rushed into place to relieve CMEEC's electric supply squeeze in south central Connecticut.